

QT Series

RECIPROCATING AIR COMPRESSOR

Splash Lubricated

3 - 15 HP

*The QT series, two-stage,
air-cooled reciprocating
compressor gives the
performance you require
at the price you can afford.*



Performance you require at a price you can afford

Inside the QT

The QT reciprocating compressor is reliable and economical.

It produces operating pressures up to 175 PSIG.

QT compressors are available in complete assemblies to meet your specific needs. All components are manufactured in the U.S.A. The compressors are assembled in Centralia, Washington.

The economical QT compressor can be assembled in a variety of configurations to meet your specific needs. Horizontal, tank-mounted machine shown.



What features make the QT the most reliable for the price?

SPLASH LUBRICATION

Extra oil reserve

The lubrication system has an extra-large oil reservoir to ensure low oil temperature during operation.

Loadless start

The QT starts unloaded and is immediately ready to go to work.

Lubrication safety

Loss of lubrication during operation is the most common cause of destructive failure in oil-lubricated compressors. The QT is equipped with an oil level indicator to ensure that sufficient oil is available for safe operation before start-up. A low oil level automatic shutdown switch is an option as an additional safeguard.

Valve design provides the highest volume efficiency in the marketplace, using replaceable stainless steel valves for maximum strength

Electronically balanced, fan-type cast iron flywheel delivers a powerful flow across the intercooler, cylinder, and head for effective unit cooling and smooth operation

High-efficiency finned intercooler reduces interstage air temperature for maximum performance and increased volume

CAD/CAM designed and balanced, counter weighted crankshaft assures smooth, trouble-free operation

MECHANICAL STRENGTH

Cast iron construction

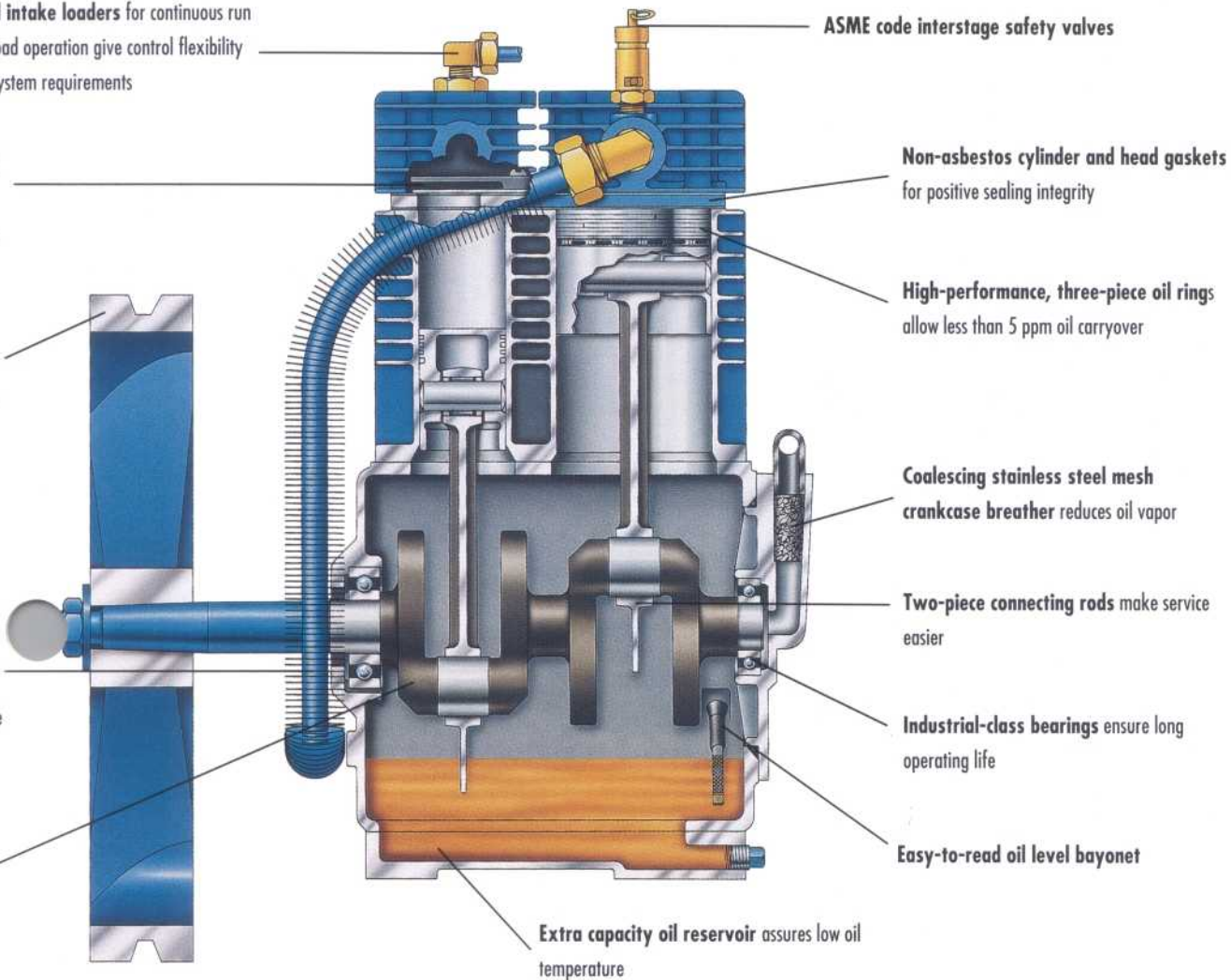
The QT's deep-finned, cast iron cylinders achieve cool operation. The cast iron crankcase provides sufficient weight and strength to ensure smooth operation. All components are easily accessible, and moving parts are kept to a minimum.

Additional intake loaders for continuous run
load/unload operation give control flexibility
to meet system requirements

metric
maximum

st,
of air
s for
on

oler
ive life



ASME code interstage safety valves

Non-asbestos cylinder and head gaskets
for positive sealing integrity

High-performance, three-piece oil rings
allow less than 5 ppm oil carryover

Coalescing stainless steel mesh
crankcase breather reduces oil vapor

Two-piece connecting rods make service
easier

Industrial-class bearings ensure long
operating life

Easy-to-read oil level bayonet

Extra capacity oil reservoir assures low oil
temperature

Ball bearings

The QT has heavy-duty, ball bearings
to provide reliable operation and long
life.

Stainless steel valves

The QT's stainless steel valve design
livers the highest CFM per
horsepower of any comparable
compressor.

Balanced crankshaft

The counterweighted crankshaft is
dynamically balanced for low
vibration operation.

Cooling air flywheel

The cast iron flywheel smooths
operation and functions as a high-
efficiency fan that transfers heat
away from the valves and cylinders.

Service commitment

For 45 years, we have had a commitment to provide immediate, quality service. What does this mean to you?

You can count on a reliable compressed air supply.



Factory trained technicians

Our technicians are trained at the plant year around. While specializing in servicing Quincy Northwest, our technicians are trained to work on all system components, from compressors and vacuum pumps to blowers and dryers.

Available anytime

We have a fleet of over 30 fully-equipped service trucks staffed by experienced technicians. We can work on site and keep your downtime to a minimum. We are on call 24 hours a day, 7 days a week to handle sales, repair/service, parts, and rentals.

We also supply:

- Start-up assistance
- Factory-monitored maintenance program
- Service reminder program
- Energy usage audits and energy saving equipment options

ROGERS MACHINERY COMPANY, INC.

Full service locations

24 hours a day / 7 days a week

- New and used equipment sales
- Repair and service
- Parts
- Rentals

OREGON

Portland (Corporate Offices)

14600 S.W. 72nd Avenue
97224-7943
Post Office Box 23279
Portland, OR 97281-3279
Phone: 503/639-6151
Fax: 503/639-1844

CALIFORNIA

Eureka

3428 Jacobs Avenue
Eureka, CA 95501
Phone: 707/443-6388
Fax: 707/442-1086

IDAHO

Boise

Post Office Box 4421
Boise, ID 83711
Phone: 208/342-3815
Fax: 208/338-9368

WASHINGTON

Centralia

3409 Galvin Road
Post Office Box 548
Centralia, WA 98531
Phone: 206/736-9356
Fax: 206/736-8630

Seattle

7800 Fifth Avenue South
Seattle, WA 98108
Phone: 206/763-2530
Fax: 206/763-1187

Spokane

Spokane Industrial Park
E. 16615 Euclid Avenue
Spokane, WA 99216
Phone: 509/922-0556
Fax: 509/922-0910

QNW-QT-BRO (993)